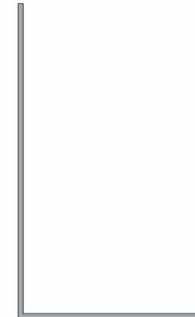
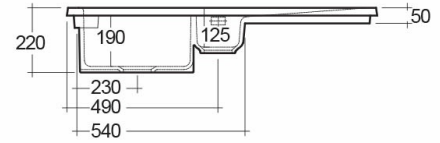
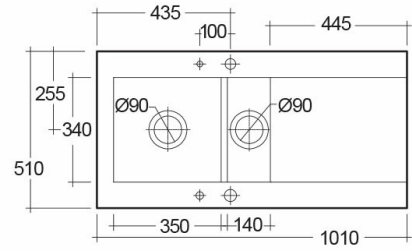


RAK-DREAM 1 - ALPINE WHITE

Drop In | Kitchen Sink

RAK
CERAMICS



Technical specifications

Dimensions:	1010 x 510 mm
Weight:	30 Kg
Color:	Alpine White
Vanity space:	yes
Suites:	Kitchen Sinks

Code	Name
OC200LHSLAWHA	KITCHEN SINK 1 - ALPINE WHITE - Left Hand Side Drain Board
OC200NTSLAWHA	KITCHEN SINK 1 - ALPINE WHITE - No Tap Hole
OC200RHSLAWHA	KITCHEN SINK 1 - ALPINE WHITE - Right Hand Side Drain Board

Dimensions: All dimensions in mm. Tolerance of vitreous china & fireclay items: $\pm 5\%$ for below 200mm and $\pm 3\%$ for above 200mm; for all other items tolerance $\pm 1\%$. Note: Due to a continuing development program to improve design and performance, the manufacturer reserves all rights to vary specifications without prior information. Please note accessories are for photographic use only.