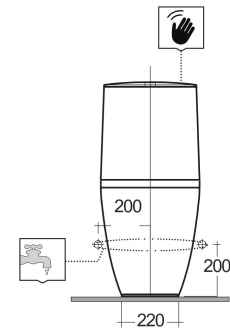
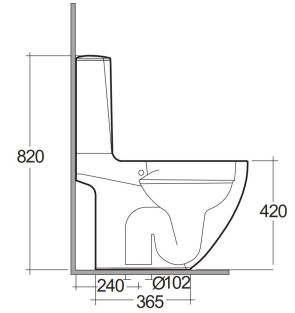
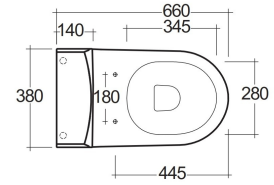


RAK-DES WITH TOUCHLESS FLUSHING

Close Coupled | Water Closet

RAK
CERAMICS



TECHNICAL SPECIFICATIONS

Suite:	RAK-DES
Type:	Close Coupled
Dimensions:	660 x 380 mm
Weight:	31.3 Kg
Color:	Alpine White
Trap type:	P Trap & S Trap
Trapway type:	Concealed
Seat cover options:	Urea
Bowl shape:	Round
Soft close:	yes
Flush Type:	Dual Flush

Code	Name
SENWT1805AWHA	RAK-SENSATION TOUCHLESS FLUSH
DESWC1045AWHA	RAK-DES RIMLESS BACK OPEN WC 66 CM S TRAP
DESSC3901WH	RAK-DES SOFT CLOSE UREA SEAT COVER
DESSC3900WH	RAK-DES UREA SEAT COVER

Dimensions: All dimensions in mm. Tolerance of vitreous china & fireclay items: $\pm 5\%$ for below 200mm and $\pm 3\%$ for above 200mm; for all other items tolerance $\pm 1\%$. Note: Due to a continuing development program to improve design and performance, the manufacturer reserves all rights to vary specifications without prior information. Please note accessories are for photographic use only.